

TREASURED TREES OF OAKLEY

recognize preserve protect
OUR LIVING HERITAGE

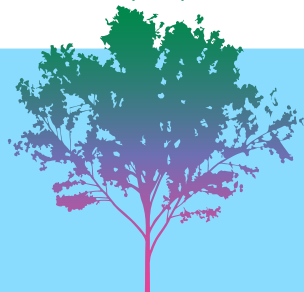
Asheville Greenworks' Treasured Trees program encourages stewardship of our urban forest by raising awareness of the valuable & irreplaceable trees in our community. This is a voluntary program & everyone is encouraged to get involved.

You can nominate a Treasured Tree on either public or private property in Oakley based on these criteria:

- Historic, environmental or significant value
- A species, subspecies, cultivar proven to be long-lived & adapted to our geographic region
- Health and condition that gives tree a reasonable prospect of continuing useful life

AWARDS

- Viewing & measuring the tree will occur after a nomination is made & permission is given by owner
- Owner receives recognition with a certificate
- Each tree receives a plaque to identify species



Nominations will be reviewed by the Asheville GreenWorks Treasured Tree Committee

NOMINATE A TREE

To nominate a tree on your own property, please complete the online form or send the following information to the address or email below.

- Tree owners name, address phone and email
- Species of Tree (If known)
- Location on property
- Photograph(s) of tree
- Nominator name and contact information
- Explanation of why tree should be considered a treasured tree

Online Nomination Form available at:
ashevillegreenworks.org/treasured-trees

Mail nomination submissions to GreenWorks,
2 Sulphur Springs Road, Asheville, NC 28806 or
email to info@ashevillegreenworks.org



HELP KEEP OAKLEY GREEN



Oakley Tree Keepers
A committee of the Oakley Neighborhood Association

Startup funds for this initiative provided by
City of Asheville Neighborhood Matching Grant
Professional arborist assistance provided by
Heartwood Tree (heartwoodtree.com)





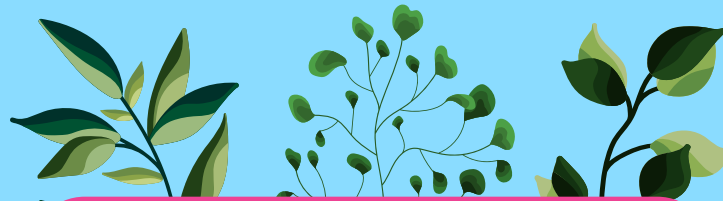
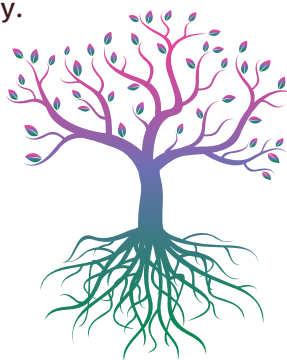
"Our mission is to help our neighbors preserve existing mature trees in Oakley & to promote healthy tree maintenance & planting of new trees."

Why do we need tree keepers? Unfortunately, Oakley lost almost 8% of its tree canopy cover between 2008 & 2018.

Let's work together to protect and preserve the many 100+ year old oaks & other important trees that still thrive in our community today.

How can I help?

- Learn about the many benefits of urban trees!
- Learn about healthy tree maintenance
- Call before you cut! Get a free risk assessment from a certified arborist before taking action.
- Protect the critical root zone of your trees.
- Plant new trees *strategically & correctly*.
- Nominate a tree for Greenworks' Treasured Tree program.
- Volunteer with us! Email oakleyneighborhoodassociation@gmail.com or visit www.oakleyneighborhoodassociation.com.



EXPLORE THE MANY BENEFITS OF TREES

ECONOMIC

- Properly placed trees around a home can reduce cooling bills by 15-35% & heating energy by 20-50% per year
- Mature trees can increase property values by 5-20%
- Appraised values of mature trees range between \$1,000 - \$10,000
- Lifetime monetary benefits far outweigh lifetime costs for many trees

ENVIRONMENTAL

- Reduce water pollutants, runoff and erosion
- Recharge ground water supplies
- Filter urban air pollutants and fine particulates
- 1 tree removes 1 ton of CO2 from the air per year, mitigating climate change
- Provide invaluable wildlife habitat and food

COMMUNITY/SOCIAL

- Strategic placement of trees in cities can cool the air between 2-4° F
- Save taxpayer dollars through reduced energy usage
- Provide shade, windbreaks, glare reduction & 5-10 decibels noise reduction
- Add aesthetic quality for residents and tourism
- Make streets more walkable & foster interactions between people
- Communities with more mature trees are found to have reduced crime rates

HEALTH

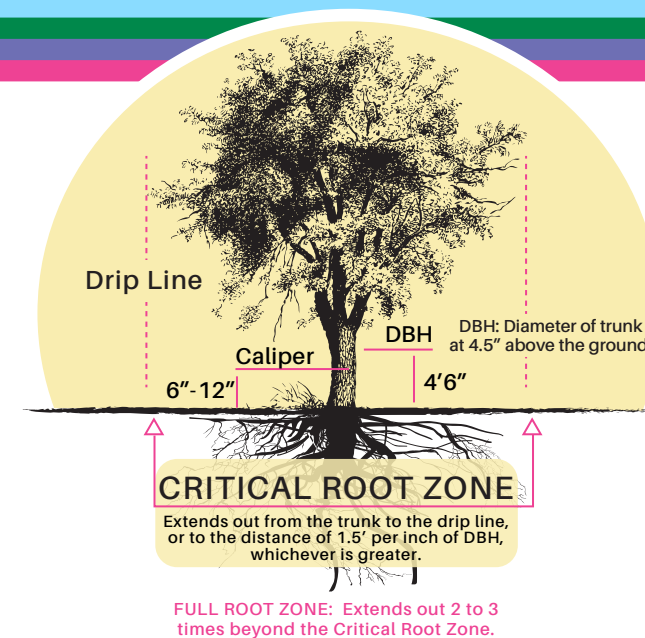
- Trees in urban areas improve citizens' physical and mental health
- Tree access leads to better & faster recovery from illness/injury
- Access to urban trees has a calming effect - reducing blood pressure and stress
- Just 2 mature trees provide enough oxygen for a family of four per year

Facts and figures from fao.org, columbusufmp.org, USDA Forest Service

See what your tree is worth! Visit <http://www.treebenefits.com/calculator/> to explore the many benefits a specific tree on your property might have!

PRACTICAL TIPS: caring for your trees

Learning about proper maintenance & pruning can go a long way to keep a tree healthy & reduce risk to people & property



Are you planning a project near a tree? Plan a protection zone or call an arborist before you begin! Protect the critical root zone of your trees before beginning construction.

Are you fearful of a tree on your property?

- Have a tree risk assessment done by a TRAQ (Tree Risk Assessment Qualified) trained ISA Certified arborist.
- Assessments are based on 4 risk factors of failure: High winds/weight overload, foundation or root damage, strength-loss of the structure (cavities, exposed wounds or cracks in limbs and trunk) of failure & the severity of damage it might cause.
- This will give you a baseline to decide whether you should invest in & maintain the tree to enjoy the benefits, or take a loss & remove the tree

To find an ISA Certified Arborist, visit: www.treesaregood.org/findanarborist

*COA Urban Tree Canopy Study, October 2019

Continue reading to find out exactly what you can do to help protect our trees!